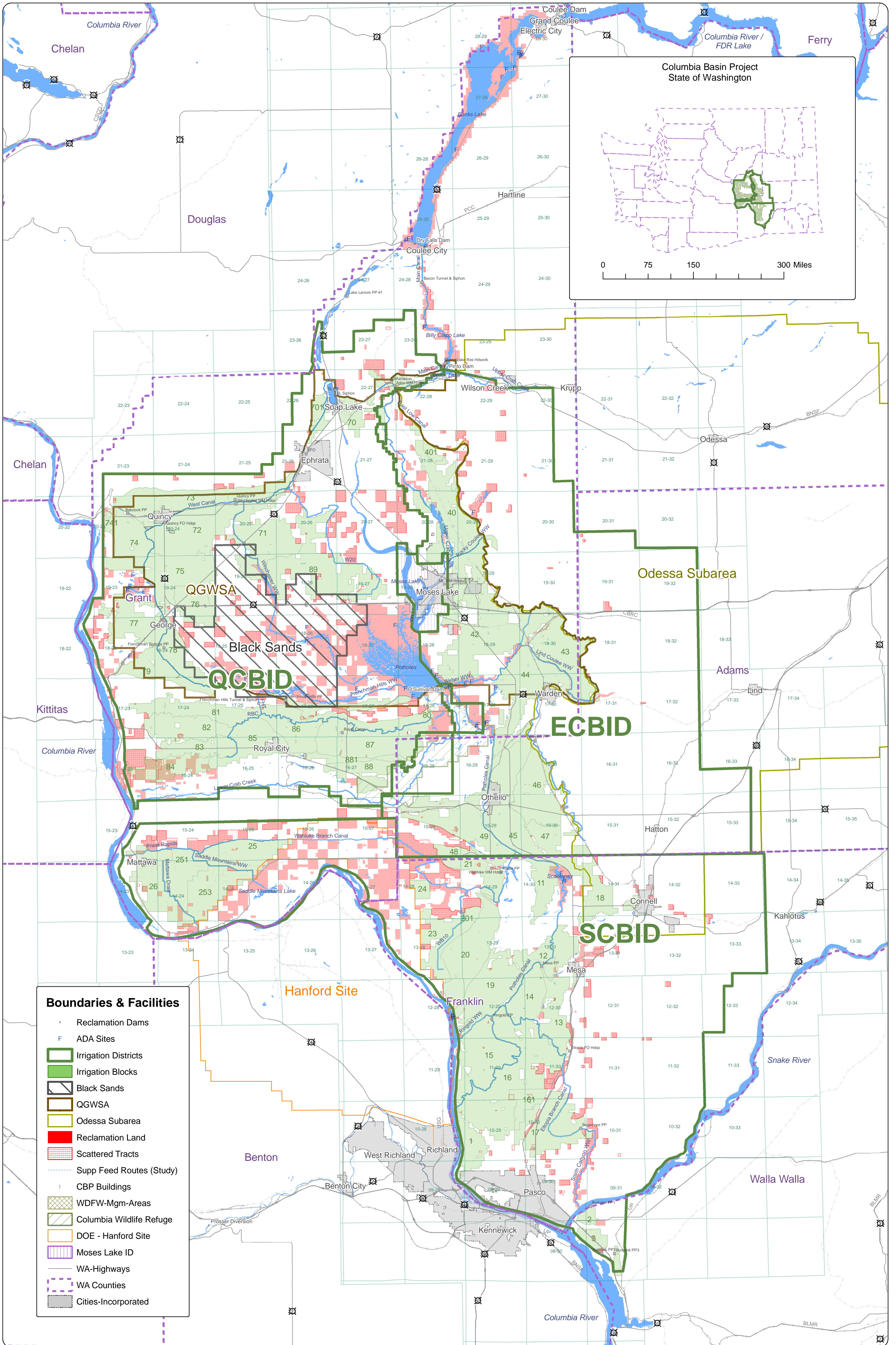


Columbia Basin Project Adams, Franklin, and Grant Counties, Washington



- Boundaries & Facilities**
- Reclamation Dams
 - F ADA Sites
 - ▭ Irrigation Districts
 - ▭ Irrigation Blocks
 - ▨ Black Sands
 - ▭ QGWSA
 - ▭ Odessa Subarea
 - ▭ Reclamation Land
 - ▭ Scattered Tracts
 - ⋯ Supp Feed Routes (Study)
 - ▭ CBP Buildings
 - ▨ WDFW-Mgm-Areas
 - ▨ Columbia Wildlife Refuge
 - ▭ DOE - Hanford Site
 - ▭ Moses Lake ID
 - ▭ WA-Highways
 - ▭ WA Counties
 - ▭ Cities-Incorporated

0 5 10 20 Miles
1:300,000

This map is provided as a convenience to the public and is for display purposes only. The data portrayed have been produced by different sources employing varying, or unknown, standards of accuracy and precision. These data may not be current, complete, or coincident. The depiction of property lines, boundaries, and imagery are not intended to substitute for a survey.