

Odessa Groundwater Replacement Program (OGWRP)

East Columbia Basin Irrigation District
Landowner Meeting
June 26, 2014
Moses Lake, WA



Levi Johnson
East Columbia Basin Irrigation District
Development Coordinator
55 N 8th Ave./PO Box E
Othello, WA 99344
(509) 488-9671
ljohnson@ecbid.org

- General (water supply, partners)
- Construction activities
- Delivery system preliminary design
- Moving forward
- Questions and discussion

Outline



OGWRP water supplies

- OGWRP Total = ~87,000 acres
 - Odessa Subarea Special Study (OSSS)
 - 70,000 acres
 - Lake Roosevelt Incremental Releases Program (LRIRP)
 - 10,000 acres
 - Coordinated Conservation
 - Estimated 7,000 acres

General





OGWRP partners

- **U.S. Bureau of Reclamation**
 - Columbia Basin Project (CBP) Federal facilities, water rights
- **Department of Ecology**
 - Funding, Secondary use permit
 - Office of Columbia River & Eastern Regional Office
- **East Columbia Basin Irrigation District**
 - Contract with Reclamation for O&M
 - Contract with individual landowners
- **Landowners**
 - Will contract with the District through Reclamation-approved Water Service Contracts (WSC)

General



Water supply update

- **Coordinated Conservation**
 - Currently ~5,700 acres available
 - Master Water Service Contract (MWSC) Amendment
 - Memorandum of Understanding (MOU) between partners expected in July
- **LRIRP**
 - 10,000 acres available, secondary use permit
 - MWSC Supplement
 - LRIRP MOU expected in July
- **Odessa Subarea Special Study (OSSS)**
 - Secondary use permit issued for 70,000 acres
 - Supplement to MWSC being addressed

General



Water supply update

- **Coordinated Conservation & LRIRP**
 - ~15,700 acres available
 - Water supplies likely to be combined in WSCs (e.g. 1/3 CC + 2/3 LRIRP)
 - WSCs will likely allow growers to install personal systems
 - Growers will likely be required to take delivery from a District system with an OSSS WSCs, if in the vicinity

General

East Low Canal: earthwork

- 96% of Zone 1 complete (13 miles of ELC)
- Improved ELC impact seen with Lind Coulee Wasteway (LCWW) feed
- Zone 2 work started (31 miles of ELC)
- Earthwork completion planned for May 2015



Construction activities

East Low Canal: bridges

- Four (4) county bridges in ELC Lind Coulee reach being addressed
- Working w/ Adams and Grant counties
- Contracting with engineering design consultant
- Additional bridge work required for Scootenev reach



Construction activities



East Low Canal: siphons

- Reclamation Technical Service Center (TSC) has provided designs
- Bid Docs for Lind Coulee No. 1 & 2 siphons and LCWW radial gate
- District Project Management/Contract Administration
- Technical support from Reclamation
- Three (3) additional siphons and five (5) additional radial gates needed

Construction activities



Early action activities

- Construction tasks
- Establish supplements/amendments, MOUs and contracts to deliver groundwater replacement water
- Delivery system preliminary design
 - Incorporating Ecology, Reclamation, District criteria
 - Meeting growers' needs
- Financing

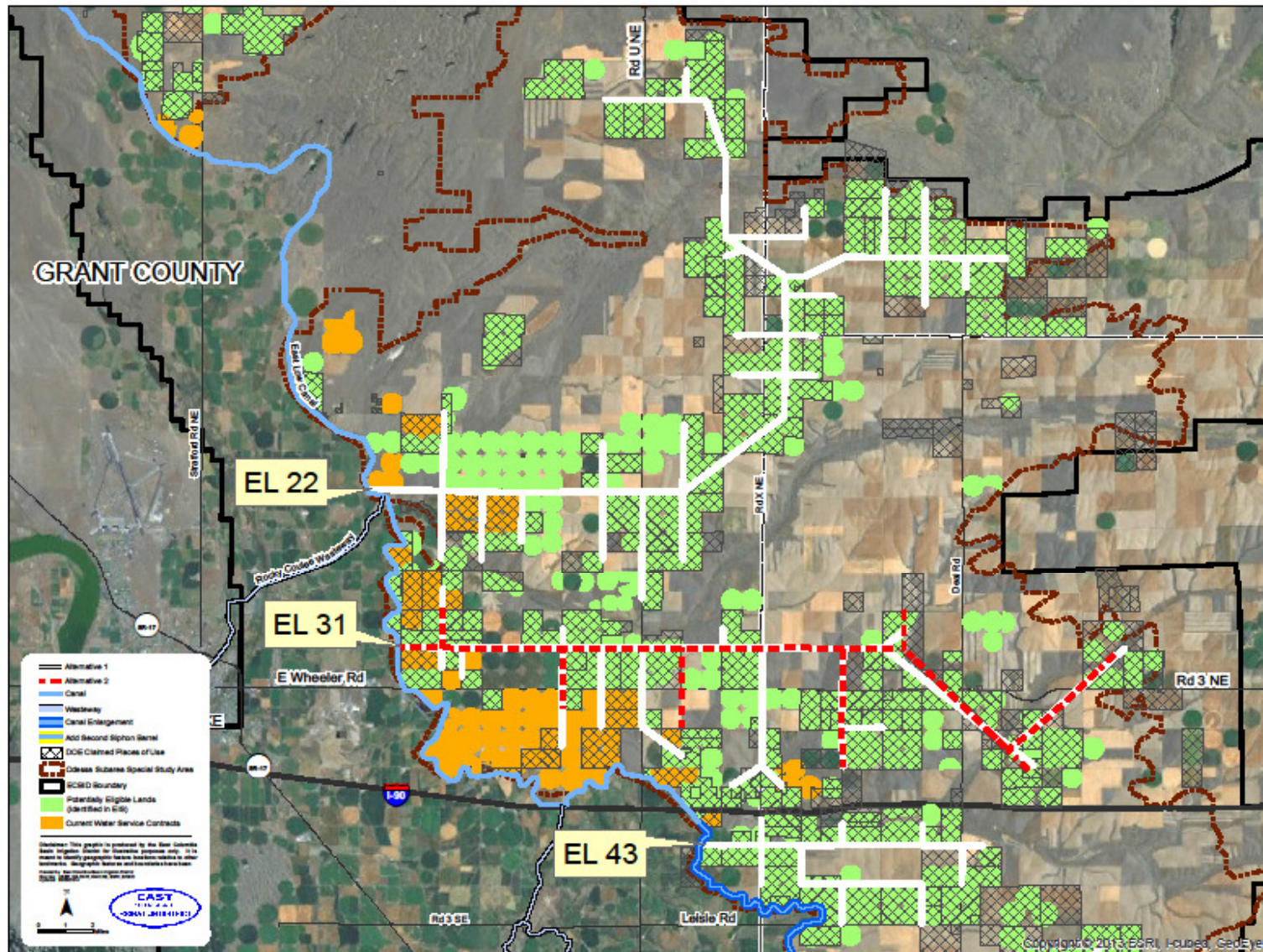
Delivery system prelim. design



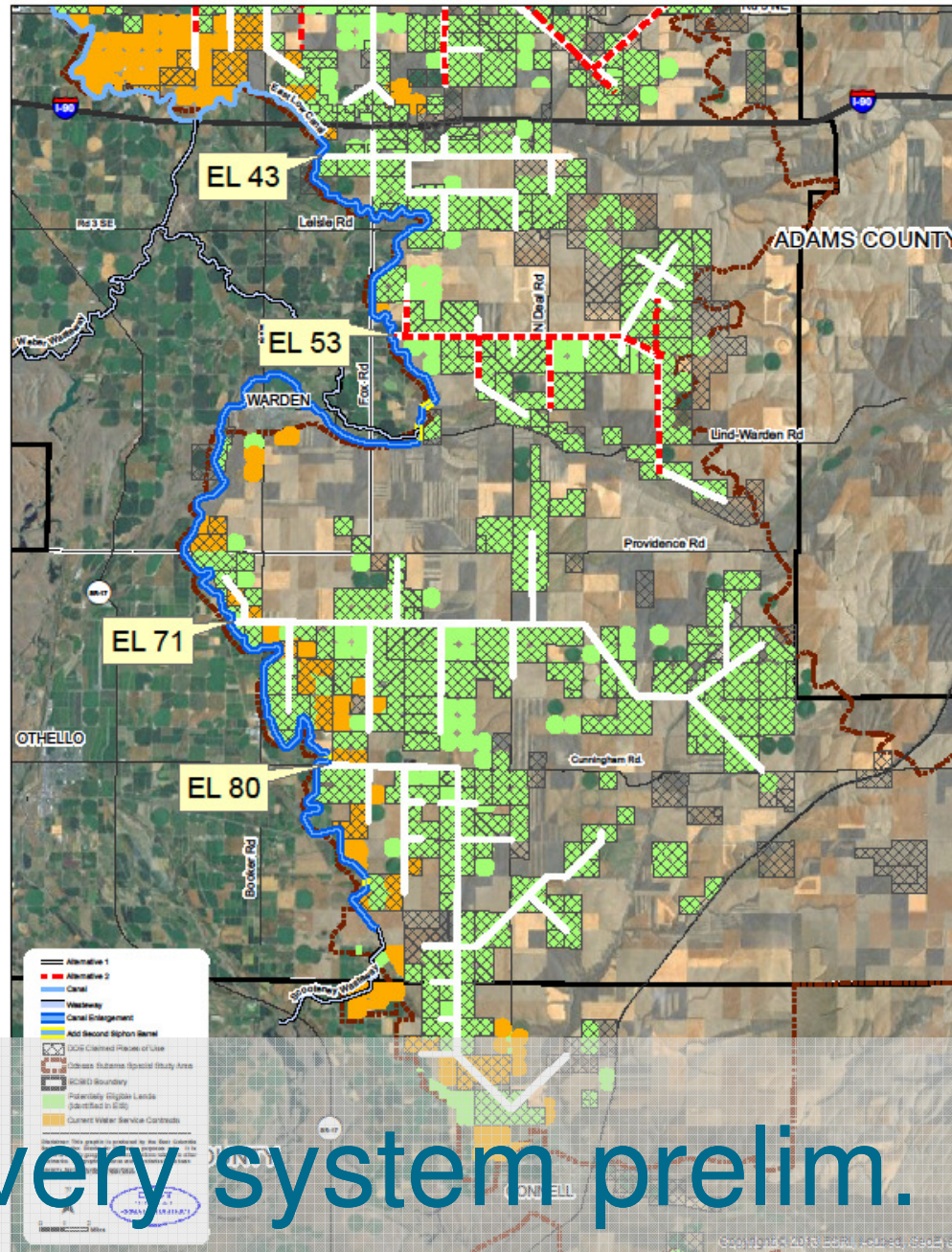
Eligibility criteria

- **Ecology:** State-issued groundwater right certificate/permit
- **Reclamation:** CBP inclusion, in the OSSS, land class, authorized WSC, subject to Reclamation Reform Act (RRA)
- **District:** Ability to enter into WSC, pay O&M/repayment, compliance with above criteria, monitoring

Delivery system prelim. design



Delivery system prelim. design



Delivery system prelim. design



General design criteria

- Delivery of 3 acre-feet/acre
- Closed pressurized system
- 5 psi minimum delivery pressure
- Optimization: System efficiency, cost
- Booster stations considered
- Supervisory Control And Data Acquisition (SCADA) enabled systems
- Most acceptable alternatives

Delivery system prelim. design

Capital cost

- Pumping plants
 - Pump & motor, VFDs, electronics & controls, buildings, transformers
- Pipelines
 - Pipe, fittings, turnouts, meters, installation
- Easement acquisition
- Power transmission



Delivery system prelim. design

Ballpark estimates

Preliminary Delivery System Layout: Pipe & Install Ballpark Figures

System	Pipe Cost	Acres Served
EL22	\$51,800,000	16,690
EL31	\$37,100,000	17,496
EL43	\$12,400,000	8,115
EL53	\$16,700,000	12,979
EL71	\$37,600,000	20,225
EL80	\$26,200,000	14,300
Total	\$181,800,000	89,805

Delivery system prelim. design

Ballpark estimates

Preliminary Delivery System Layout: Ballpark figures

i.d.	Description	Total Cost	Cost per Acre
1	Pipe & install	\$190,000,000	\$2,116
2	Pumps & motors	\$30,000,000	\$334
3	Electrical, controls, etc.	\$175,000,000	\$1,949
4	Easement acquisition	\$5,000,000	\$56
5	Transmission utilities	\$20,000,000	\$223
6	Crossings	\$600,000	\$7
7	Design	\$1,200,000	\$13
8	ELC Improvements	\$30,000,000	\$334
Sub-total		\$451,800,000	\$5,031
Contingencies (25%)		\$112,950,000	\$1,258
Total		\$564,750,000	\$6,289

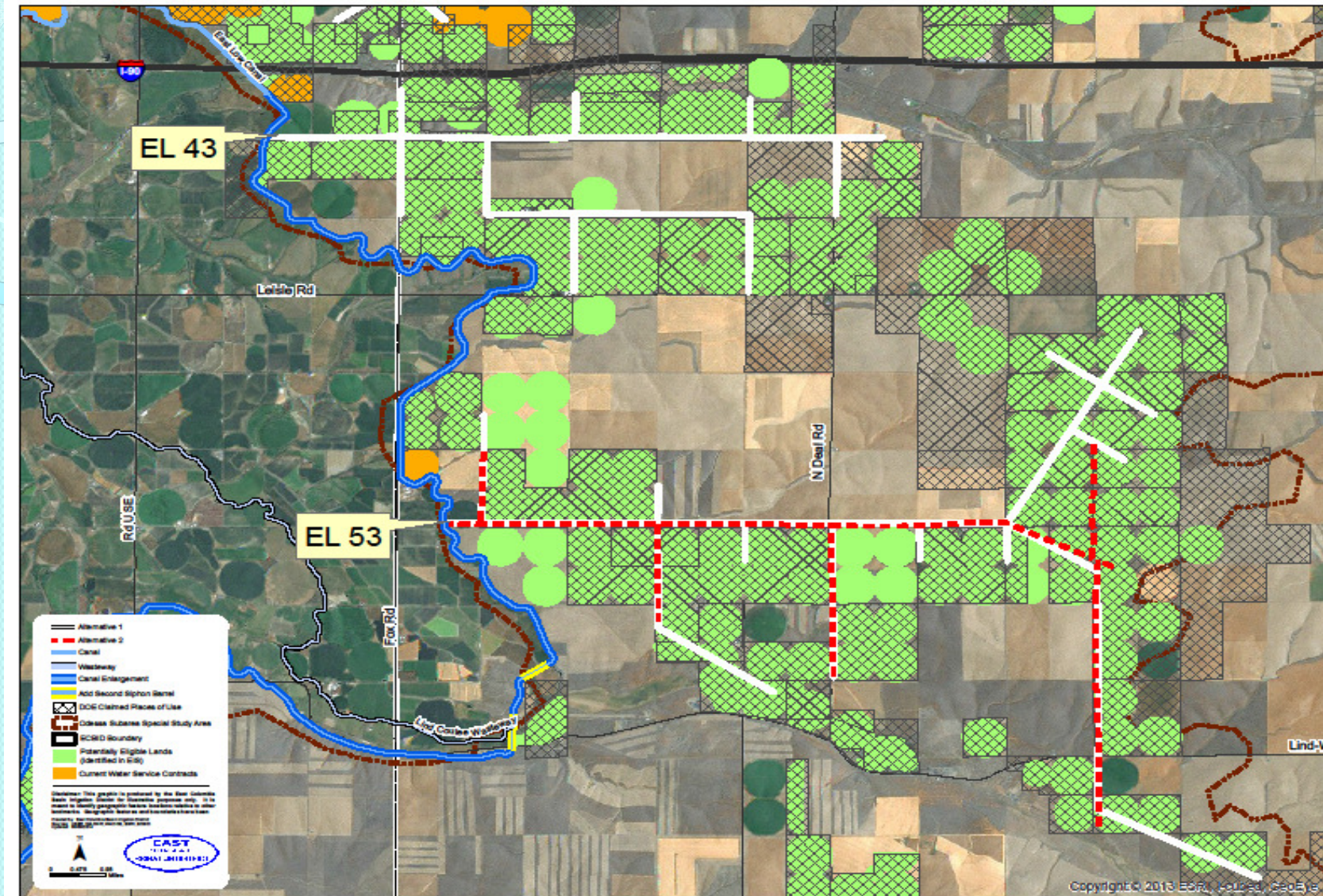
Delivery system prelim. design

Total cost estimates

- Repayment costs
- O&M costs
- Financing costs
 - Revenue Bond



Delivery system prelim. design



Delivery system prelim. design



Refining Preliminary Design & Cost

- Define alternatives
 - System layout, pump & motors, pipe material, easement options, transmission, etc.
- Feedback from growers
 - Points of delivery, specific Q&A
 - System-based landowner meetings: July – Aug.
- Eligibility confirmation
 - Place of use, CBP inclusion, irrigable land class
- Verify Feasibility
 - Financing options with advisors and counsel

Moving Forward

Water supplies

- Coordinated Conservation & LRIRP
 - Sign MOUs (Reclamation, Ecology and District)
 - Adopt Board resolution
 - Administer Reclamation WSCs
- OSSS
 - Similar approach
 - Renewal of MWSC



Moving Forward



Timeline

- System landowner meetings: Jul.- Aug 2014
- CC & LRIRP WSCs: Sept. 2014 – March 2015
- Updated alternatives/costs: Oct. 2014
- ELC Lind Coulee reach completed: March 2015
- MWSC renewal: Dec. 2014
- OSSS MOU and WSCs: Spring 2015
- OSSS financing: 2015
- Delivery system design/construction: 2015-2018
- OSSS water deliveries: 2016-2018

Moving Forward

Questions and Discussion



East Columbia Basin Irrigation District

(509) 488-9671 ljohnson@ecbid.org