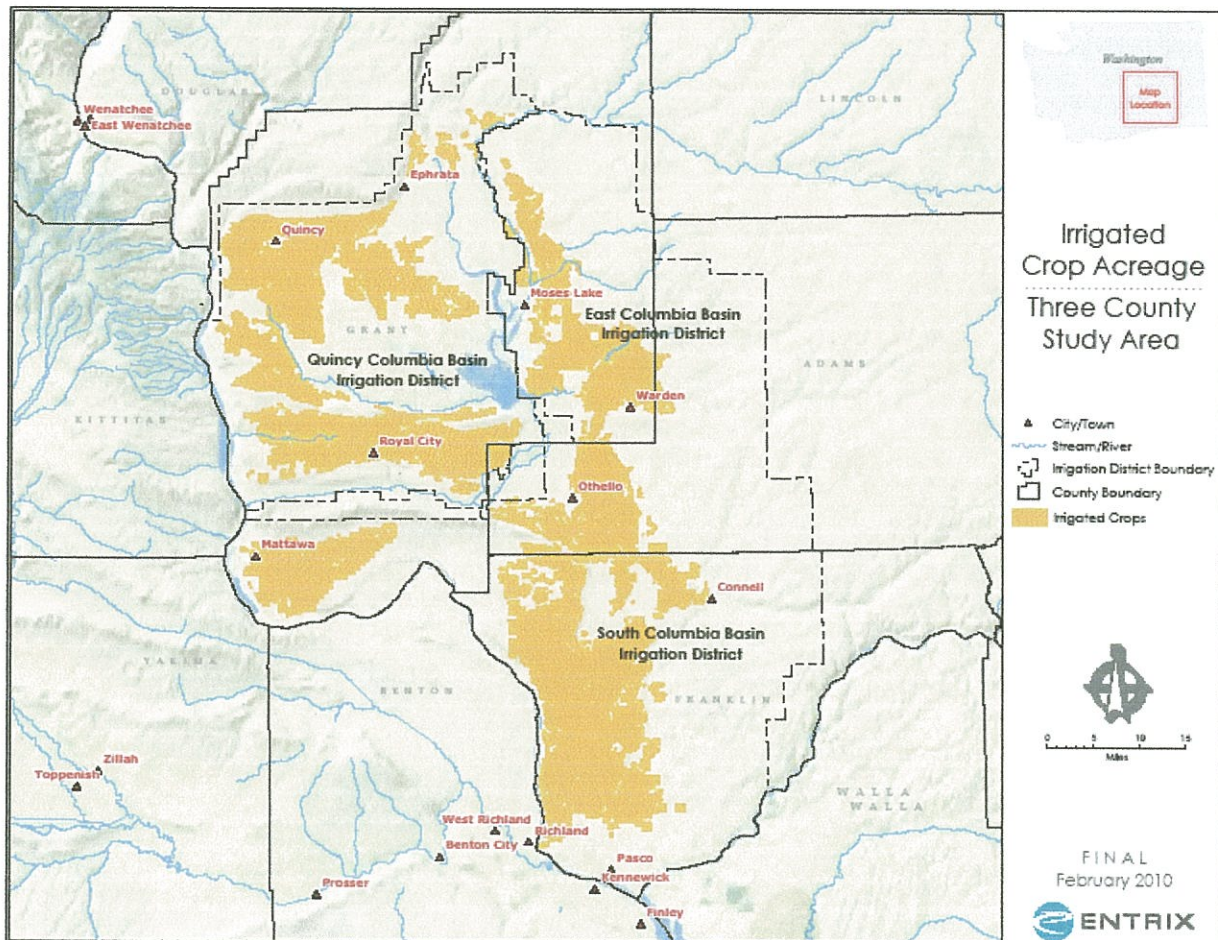




Economic and Fiscal Contribution of Agriculture Irrigated by the Columbia Basin Project (CBP)

The CBP in southeastern Washington State diverts 2.3 to 2.7 million acre-feet of Columbia River water and irrigates 621,000 acres of productive farmland in Adams, Franklin, Grant, and Walla Walla Counties (see map below). Primary crops grown include potatoes, onions, orchard fruits, grapes, alfalfa hay, wheat, corn, and seed and specialty crops. The total value of production is estimated at approximately \$1.44 billion annually (2008 dollars). Lands irrigated with water from the three CBP irrigation districts (South, East, and Quincy) generate economic and fiscal benefits to the local, Washington State, and national economies.

Economic impacts of the CBP include the direct generation of on-farm jobs and income in the local area, as well as the “ripple” effects on other economic sectors as expenditures on goods and services throughout the local, state, and national economies increase to meet CBP-related demand. Fiscal impacts include property, sales, and income tax revenues generated by CBP-related economic activity at the local, state, and national levels.





Economic Impacts

Local Economic Contribution

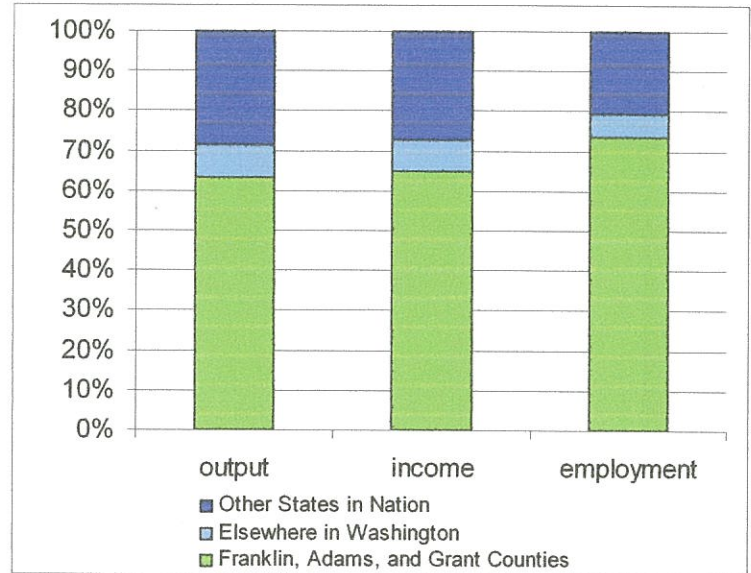
- ❖ Income: \$1,568 million
- ❖ Employment: 28,500 jobs

WA State Economic Contribution

- ❖ Income: \$194.2 million
- ❖ Employment: 2,400 jobs

Total U.S. Economic Contribution

- ❖ Income: \$2,424 million
- ❖ Employment: 38,900 jobs



Although not estimated, the CBP also provides economic benefits through provision of water to numerous wildlife and recreation areas that provide opportunities for wildlife viewing, hunting, fishing, camping, swimming, and boating. Through creating and enhancing recreation opportunities in the study area, the CBP helps to attract numerous visitors to the area. Visitors spend money at retail stores, hotels, restaurants, gas stations, and other local businesses, thereby generating additional jobs and income.

Fiscal Impacts

A portion of the economic benefit generated by the CBP supports government revenues. The total tax contribution of the CBP includes local property taxes, local and state sales taxes, and federal income taxes. While the CBP may generate additional taxes, these are expected to be the primary tax revenue sources. The table below summarizes the taxes generated by CBP-related activity for local government, Washington State government, and the national government.

Summary of CBP-Related Tax Revenues (Millions \$)

	Local Tax Revenues	WA State Revenues	United States Revenues	All Regions
Property Tax	\$13.4	N/A	N/A	\$13.4
Sales Tax	\$6.9	\$37.8	N/A	\$44.7
Income Tax	N/A	N/A	\$128.2	\$128.2
Total	\$20.3	\$37.8	\$128.2	\$186.3